



Ipswitch Masters Series

15 minute webinars

Hosted by your Ipswitch Masters

March 7, 2019

MOVEit: 11:30 AM ET

WhatsUp Gold: 1:30 PM ET



Our Partnership – and How You Benefit

- ✓ We sell with You – every deal we work together has a dedicated inside sales rep partnering with you to qualify and close an opportunity.
- ✓ You have full access to sales resources and technical resources for demonstrations and customer meetings.
- ✓ Every new opportunity you bring to Ipswitch gets you a 10%+ deal registration margin.
- ✓ Our commitment to you is to make our partnership profitable.
- ✓ You have two solutions to offer to your customers:

1. **MOVEit® Secure File Transfer**

2. **WhatsUp Gold® Network Monitoring**





WhatsUp Gold® Network Monitoring

What is WhatsUp Gold?



- Network availability and performance monitoring software solution.
- WhatsUp Gold provides:
 - **Complete visibility** into the status and performance of applications, network devices and servers in the **cloud or on-premises**.
 - IT teams get the **control, insight and automated resolution** needed to find and fix problems before users are impacted.
 - Assures **bandwidth is optimized** for critical applications and services.
 - **Automates** discovery, mapping, monitoring and alerting, inventory and reporting.
 - On **wired and wireless devices and cloud** resources.



Who is the Ideal Customer Profile for WhatsUp Gold?

- Decision makers and influencers include:
 - Network Managers
 - VPs and Directors of IT
- End Users include:
 - Network Admin
 - System Admin
- **Industries:** State & Local Gov, Education, Federal, Healthcare, and growing commercial companies. However, all industries with networks need this solution.
- Typical Deal Size: \$8k and up



Upgrade Opportunities for Existing WhatsUp Gold Customers

- **Application Performance Monitoring:** assures optimal service levels in critical applications
- **Network Traffic Analysis:** determine consumption of network bandwidth
- **Configuration Management:** automate and know about changes made in your network
- **VOIP Monitoring:** track performance levels and call quality
- **Virtualization Monitoring:** discover and map virtual environments from a unified dashboard
- **Scalability Pollers:** monitor up to 20,000 devices from a single interface

Frank's Quick Take

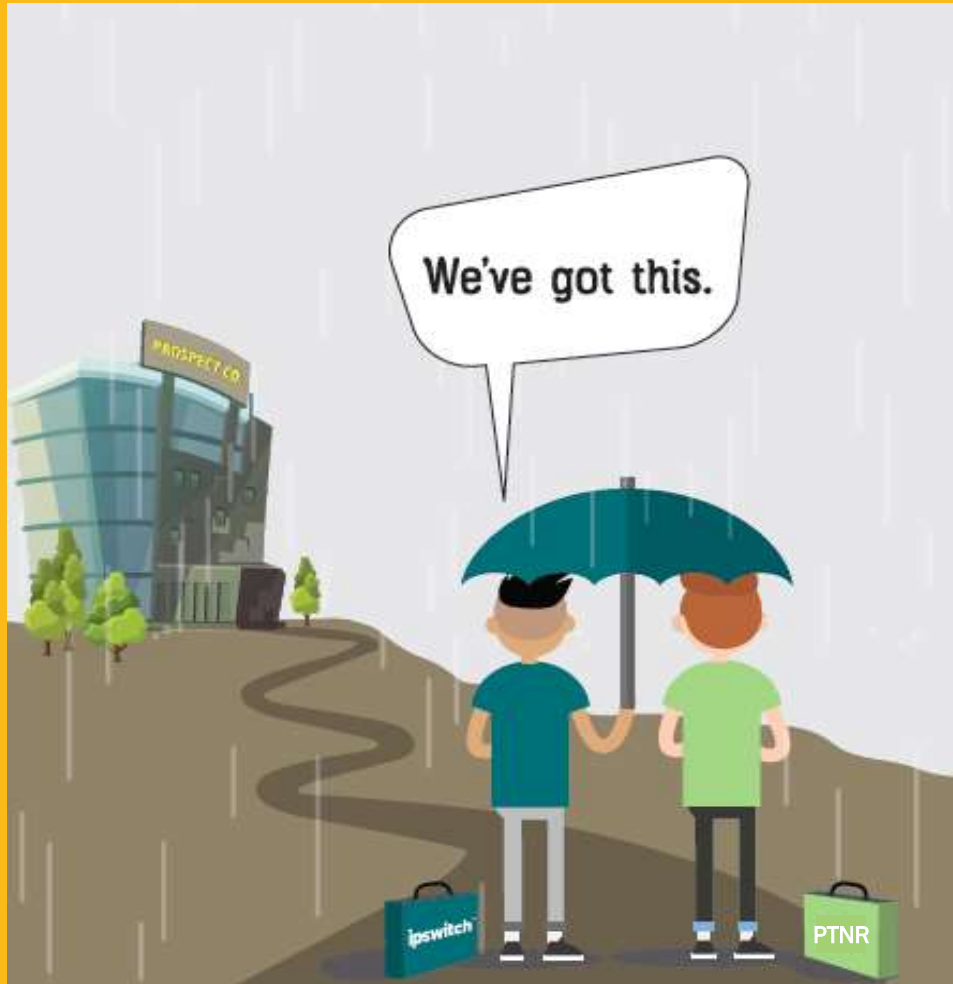
A Real World Use Case



Top 3 Key Qualifying Questions for WhatsUp Gold

1. Do you have a map that shows how your devices are connected on the network?
2. Do you currently have a proactive network monitoring solution?
3. Do you have to use multiple applications to get the visibility you need?

Don't Go Out Alone!



ipswitch



Channel@ipswitch.com

781-645-5688

Q&A