

# Neverfail Failover Manager

## Managed File Transfer with Zero Downtime and No Data Loss

Neverfail Failover Manager delivers zero downtime, no data loss, and unified failover management by maximizing availability of MOVEit Transfer with automated failover. Failover Manager enables you to:

### Ensure reliable file transfers for 24/7 operations.

Unified failover management for MOVEit Transfer, MOVEit Automation, SQL Server and Windows file servers. Failover to secondary and tertiary servers maximizes file transfer success. No single point of failure delivers 24/7 operations.

### Safeguard against data loss for business continuity and compliance.

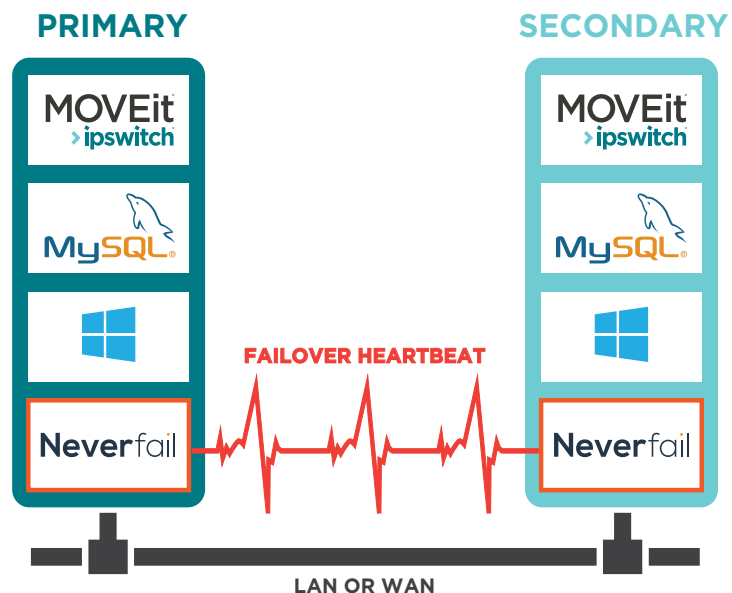
Heartbeat communication between primary and failover servers ensures zero data loss in the event of failure. Failover within a single or to remote disaster recovery site within seconds to minutes.

### Simplify and automate file transfer operations.

Predictive and automated rules-based failover ensures continuous operations. Installed in as little as an hour for local failover. No additional hardware and software for load balancing is required. Apply Windows updates on MOVEit MFT servers without downtime.

#### NEVERFAIL FAILOVER MANAGER ARCHITECTURE

Failover Manager heartbeat communication between primary and secondary servers continuously replicates data at the windows kernel level ensuring zero data loss in the event of a failure. ▶



› **REAL-TIME DATA REPLICATION**

Data is replicated to a 'hot-standby' failover server ensuring file transfer services are always available.

› **UNIFIED REAL TIME MONITORING**

Neverfail Failover Manager maintains multiple synchronized instances of MOVEit Transfer, SQL Database and Windows file server and automatically monitors health of all application and system components.

› **AUTOMATED FAILOVER RULES**

Granular and configurable policies provide run-time system remediation with failover/failback automation.

› **MANUAL FAILOVER**

Minimize scheduled downtime for Windows updates and other system maintenance.

› **LOCAL AND OFF-SITE FAILOVER**

Single datacenter LAN failover or if a site-level disaster strikes, Neverfail Failover Manager delivers rapid site-to-site failover for disaster recovery.

› **MULTI-TIER PROTECTION**

Option for failover to secondary or tertiary servers.

› **WAN ACCELERATION**

Neverfail Failover Manager incorporates WAN acceleration technology with real-time data de-duplication and compression that reduces replication volumes by up to 80 percent.

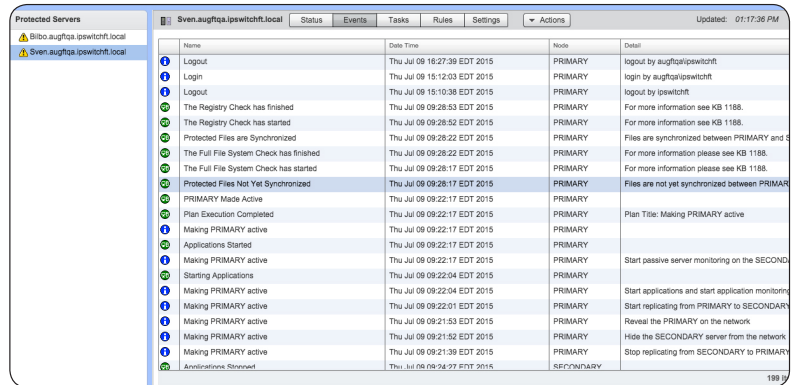
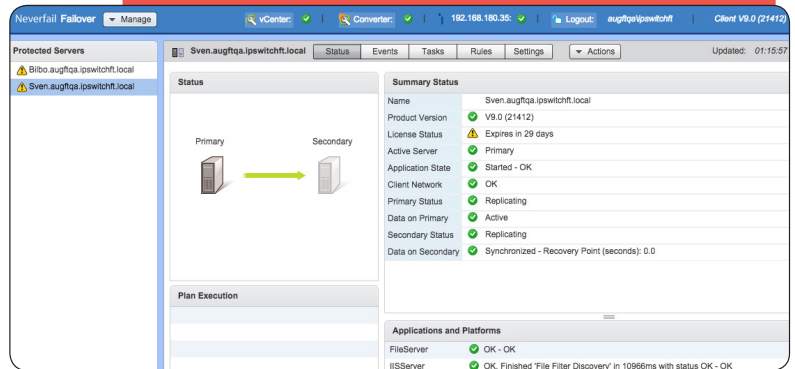
› **NO SINGLE POINT OF FAILURE**

Neverfail Failover Manager can be implemented with no single point of failure. In addition, no load balancing hardware or software is required.

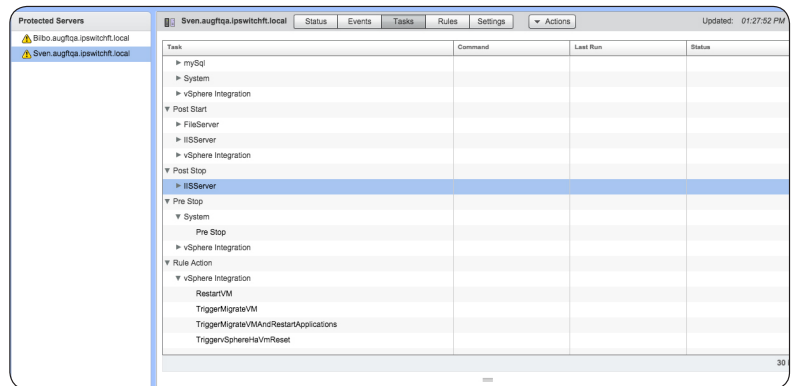
› **FLEXIBLE DEPLOYMENT OPTIONS**

Neverfail Failover Manager can be deployed in VMware (with or without vCenter access), Microsoft Hyper-V and/or physical to physical environments.

Monitor operational status for all MOVEit servers, databases and Windows file servers in a unified management tool



Detailed Log data for audits



Configure rules to optimize availability