



IPSWITCH

IMail Server

2006

IPSWITCH

Welcome

Welcome to the Ipswitch IMail Server software family. Ipswitch IMail Server 2006 is packaged in three editions: IMail Server, IMail Server Plus, and IMail Server Premium. This document provides overview information about IMail Server features, requirements, installation, administration and client application tools to manage and use IMail. It also provides information about additional help resources.

What is Ipswitch IMail Server?

Ipswitch IMail Server provides email administrators flexible access to email server administration features via browser-based IMail Server Web administration tools.

Users can send and receive email using any standards-based client, including Microsoft® Outlook®, Outlook Express, Eudora and others. Or, users can access email from anywhere via the customizable Ipswitch Web Messaging browser application.

IMail Server is reliable, versatile, easy to set up and run. IMail Server Plus includes Premium AntiSpam protection, and IMail Premium includes both Premium AntiSpam and Instant Messaging.

The Components

Ipswitch IMail Server is available in three editions:

| | IMail Server Edition | IMail Server Plus | IMail Server Premium |
|----------------------------|---------------------------------|------------------------------|---------------------------------|
| Ipswitch IMail Server | ✓ | ✓ | ✓ |
| Web Messaging | ✓ | ✓ | ✓ |
| Instant Messaging | | | ✓ |
| Standard AntiSpam | ✓ | ✓ | ✓ |
| Premium AntiSpam | | ✓ | ✓ |
| One-year Service Agreement | ✓ | ✓ | ✓ |

IMail Server, Server Plus, and Server Premium Requirements

The following are the system requirements for your server installations.

- An Intel Pentium® 4, 1 GHz or higher or an equivalent processor
- 512 MB RAM minimum
- Microsoft® Windows® 2000 Server or Microsoft Windows 2003 Server
- Microsoft .NET Framework 2.0
- (Recommended) Microsoft Internet Information Services (IIS) 5.0 or later
- Internet Explorer 6.0 or Windows Scripting Host 5.1
- Microsoft Data Access Component (MDAC) 2.6 or later
- TCP/IP enabled network interface card (NIC) with a static IP address
- A broadband or dial-up connection to the Internet
- Modem and phone line (required for mail-to-pager, mail-to-fax, and notifications)

Planning Your Installation

Things to Consider

- Does the server computer meet the system requirements?
- Decide what type of user database you want to use. Do you want to share user databases across products? Do you have an existing external ODBC database that you want to use? For information on each of the database options, see the *IMail Server 2006 Getting Started Guide*.
- Log in as an administrator before beginning the software installs.
- You may need to open specific ports to enable communications for Ipswitch IMail. Refer to the product help for information about service port requirements.
- Premium AntiVirus. If you currently have an antivirus solution installed, configure it to exclude the IMail directory (usually C:\Program Files\Ipswitch\Messaging\IMail), and IMail subdirectories.
- AntiVirus for IMail (available separately). Determine whether you want to install the antivirus software on the same server as IMail Server, or on a separate server.

For detailed information about IMail Server 2006 installation options and services, read the *IMail 2006 Getting Started Guide* before beginning the installation. The guide is available on the Web at www.ipswitch.com/support/imail/guide/2006/IMail_GettingStarted_2006.pdf

Things You Need

- **Primary Host** (server) to install the IMail Server on.
- **Host Name** (of Primary Host) for the IMail Server. Example: *mail*
- **IP Address** (of Primary Host) for the IMail Server. Example: *156.21.50.15*
- **Domain Name** to identify the network that the host is on. Example: *domain.com*
- **DNS records**. For information on how to configure DNS, see the *IMail Server 2006 Getting Started Guide*

Installing Ipswitch IMail Server 2006 software

IMail Server uses InstallShield® Wizard to install the IMail Server components on your computer. Use the on-screen instructions to select the installation features that set up the mail server to your preferences.

The installation program provides an option to automatically configure Microsoft Internet Information Services (IIS) 5.0 or later and Microsoft .NET Framework 2.0. It also sets user permissions automatically; however, if you need to configure permissions manually, see the *IMail Server Release Notes* for more information.

To activate and register Ipswitch IMail Server:

During the installation process, you need to activate your software. For information about activating and registering your software, see the activation or crossgrade card included with your purchase, or the *IMail Server 2006 Getting Started Guide*.

To set up the Premium AntiVirus subscription (available separately):

Important: If you have an existing subscription/installation to Premium AntiVirus, you do not need to obtain a new license key until your existing subscription has expired. Your existing license key will work with the new version of Premium AntiVirus. When your subscription is about to expire, Ipswitch will send an email with instructions for updating the Premium AntiVirus subscription.

If you purchased Ipswitch IMail Server and do not have Premium AntiVirus installed, you need to obtain a license key from Symantec before you install the software. You need the Symantec serial number to obtain the license key for the antivirus software.

- 1 Go to <http://visit.ipswitch.com/av> to obtain the Symantec serial number.
- 2 Go to <https://licensing.symantec.com> to activate your Symantec serial number and obtain the Premium AntiVirus license key. Upon activation, Symantec sends an email with your license key.

Note: You may be prompted to download an installation program from the Symantec Web site. Skip this option; it is not required.

Important: Make sure that you back up your license key file in a safe location in case you need to reinstall Premium AntiVirus software.

Using your IMail Server Software

After you have installed the IMail Server software, familiarize yourself with its various components listed below. The browser-based applications support:

- Microsoft® Internet Explorer 5.5 or later
- Mozilla 1.7 or later
- Firefox 1.0.6 for Microsoft Windows or later

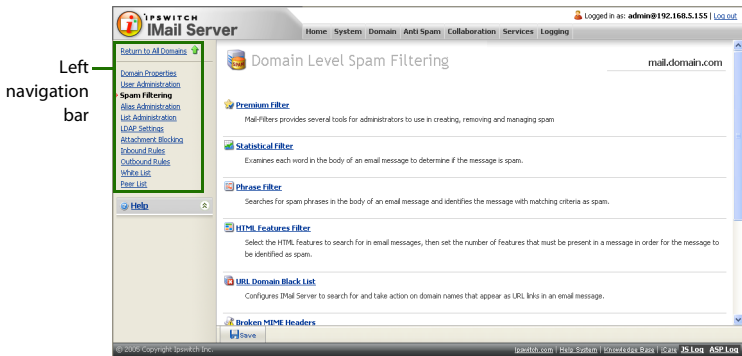
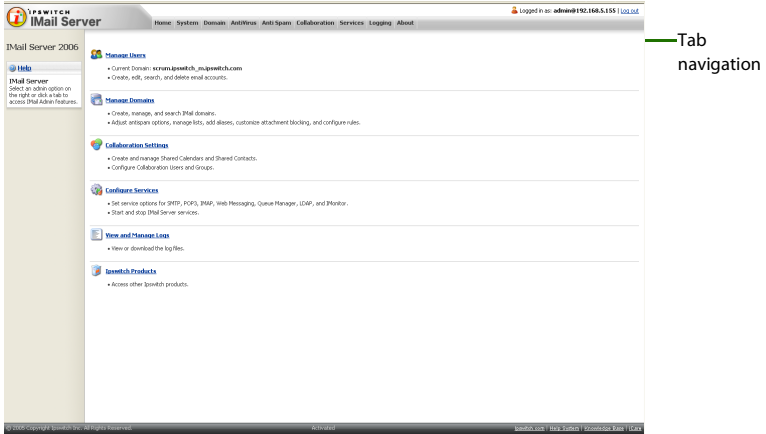
Important: When you start the IMail Server Administrator for the first time, if you are using Internet Explorer in Microsoft Windows 2003 Server, an *Internet Explorer Enhanced Security Configuration is enabled* browser screen may appear. If this screen appears, click the link to learn more about the browser's enhanced security configuration options. You may need to add IMail Server Administrator's URL to the inclusion lists in the Local intranet or Trusted sites zones.

IMail Server Administrator (Web Admin) provides local or remote access to IMail Server administration features via a Web browser.

To start the IMail Administrator:

- 1 In your browser address box, type the IP address or URL of the IMail Web Server followed by the IMail Server Web Admin path.
Example: <http://mail.domain.com/IMailAdmin>
Then press **Enter**. The Ipswitch Web Admin login page appears
-OR-
Click **Start > Programs > Ipswitch IMail Server > IMail Server Administration**. The Ipswitch Web Admin login page appears.
- 2 Enter your **Username** and **Password**. The installed Ipswitch Products page appear will appear if you are accessing remotely. If on the localhost, it will skip this step and go straight to the next step.

- 3 Click **IMail Server**. The IMail Server Administrator main page appears. You can access IMail Server Administrator options from the tabs across the top of the browser and the navigation links along the left side of the browser window.



Access the following IMail Server Admin features from the tabs:

- **Home**. Provides easy access to other installed Ipswitch products
- **System**. Provides access to system settings, server level DNS black lists, and the message queue
- **Domain**. Provides access to IMail Server domains and lets you manage domain properties, users, spam filters, aliases, mailing lists, LDAP settings, attachment blocking, inbound and outbound rules, white lists, and peer lists
- **AntiVirus** (available separately). Provides access to enable and select the server anti-virus options
- **AntiSpam** (available in IMail Server Plus and IMail Premium Editions only). Provides access to a variety of antispam features such as statistical and phrase filters (content filters), HTML feature filters, URL domain black lists, broken MIME headers, Sender Policy Framework (SPF), and connection checks for domain level DNS black lists and various verification checks.

- **Services.** Provides access to the services status and options that IMail Server supports:
 - Simple Mail Transfer Protocol (SMTP)
 - Post Office Protocol Version 3 (POP3)
 - Internet Message Access Protocol Version 4 (IMAP4)
 - Lightweight Directory Access Protocol (LDAP)
 - Queue Manager
 - Log Server
 - IMail Monitor
 - Web Calendaring (available in IMail Premium)
 - Logging
 - AntiSpam (available in IMail Plus and IMail Premium)
 - AntiVirus Scan Engine (available separately)
 - Instant Messaging available in IMail Premium)

Ipswitch Web Messaging (Web Client) sends and receives email, lets you create contacts, and lets you organize and manage mail in folders. If you used contacts or contact lists (distribution lists) in a previous version of Ipswitch Web Messaging, the contacts and contact lists are automatically imported into the new IMail Web Messaging client. A new Contacts folder is created that includes contacts and contact lists.

To start the Ipswitch Web Messaging Client:

- 1 In your browser address box, type the IP address or URL of the IMail Web Server followed by the ICS Web Client path.

Example: <http://mail.domain.com/IClient>

Then press **Enter**. The Web Messaging login page appears.

Important: To use the Web Client, the the SMTP and Queue Manager services must be running. If the services are not running, turn them on in the IMail Web Admin, under the **Services** tab..

For More Assistance

The Ipswitch Support Center provides a multitude of product related resources such as Knowledge Base articles, peer support forums, patches and documentation downloads. It also lists Ipswitch's Technical Support staff's contact information, hours of operation, and information about service agreements. You can access the support center at <http://www.ipswitch.com/support/index.asp>.

IPSWITCH Deutsch · Français · Español · Português · Korean · Chinese

For all your file transfer, network monitoring, and messaging software needs. IT JUST WORKS

Products Purchase Downloads Partners Support Company Contact Us Site Map RSS Feeds

Support

Most Recent Updates

- [WS_FTP Server 5.05 Hotfix 1 \(Sept 14, 2006\)](#)
- [IMail 2006.1 Updates \(Sept 6, 2006\)](#)
- [Ipswitch Collaboration Suite 2006.1 Updates \(Sept 6, 2006\)](#)

Product Support Centers

Your home for in-depth technical support. Choose from the centers below:

| | | |
|-------------------------------------|--|--|
| WS_FTP Home | Ipswitch Collaboration Suite | WhatsUp Small Business |
| WS_FTP Professional | IMail Server | WhatsUp Professional |
| WS_FTP Pro SDK | Ipswitch Instant Messaging | WhatsUp Gold |
| WS_FTP Server | | WS Ping ProPack |

Customer Service Center

The [Customer Service Center](#) is your home for information about Ipswitch product purchasing, licensing, and other services such as the ones listed below:

| | |
|--|---|
| Registration | Upgrades |
| Service Agreement Activation | Current Released Versions |

Search Our Knowledge Base

Our Knowledge Base contains over 1,500 documents to help you find fast and easy answers to your questions.

Enter your search term(s)

Select your product

All Products

Overview

- [Patches & Upgrades](#)
- [User Guides](#)
- [Online Forums](#)
- [Discussion Lists](#)
- [Utilities](#)
- [E-Mail Support Form](#)

Customer Service Center

- [Knowledge Base](#)

Support Centers

- [WS_FTP Home](#)
- [WS_FTP Professional](#)
- [WS_FTP Pro SDK](#)
- [WS_FTP Server](#)
- [Ipswitch Collaboration Suite](#)
- [IMail Server](#)
- [Ipswitch Instant Messaging](#)
- [WhatsUp Small Business](#)
- [WhatsUp Professional](#)
- [WhatsUp Gold](#)
- [WS Ping ProPack](#)

eBay Users

Our [eBay Reference Guide](#) offers customized assistance for your needs.