



IPSWITCH

Customizing The Web Client – Branding

Use this guide to customize the “look and feel” of the Ipswitch ICS/IMail Web Messaging Client interface by overriding Ipswitch-defined styles.



Overview

Issues

- **Browser Support:** Different browsers react differently to modifications. Although simple changes to background images and colors should be safe, other changes like width, height, events, etc. may cause unwanted results in some browsers.
- **Image Size:** We recommend that all images you replace be kept at the same width and height as the original image supplied by Ipswitch. If you wish to change an image's dimensions, check its original definition in the Cypress.css file to see if width and height are defined. Change the new image's dimensions accordingly.
- **Image Location:** When locating and naming your replacement images, do not use the same name and location as the original IMail images, or they will be overwritten during the next software repair/upgrade.

Internationalization

- **Images:** All of the changed items will be used, regardless of which language you select. This may be a problem if you place text on images and your users use multiple languages.
- **Strings:** If you change text strings, users will see the text that you override in the language used in the override. For example, if you have some users selecting French and some selecting English, your French users will see English text if you choose an English override.

Branding Folder Structure

Default Folder

The install creates the branding folder used to customize your Web Client. It includes a file named branding.config.sample that can be used as a reference, and is located in the virtual directory root. The default location for the branding folder for ICS is

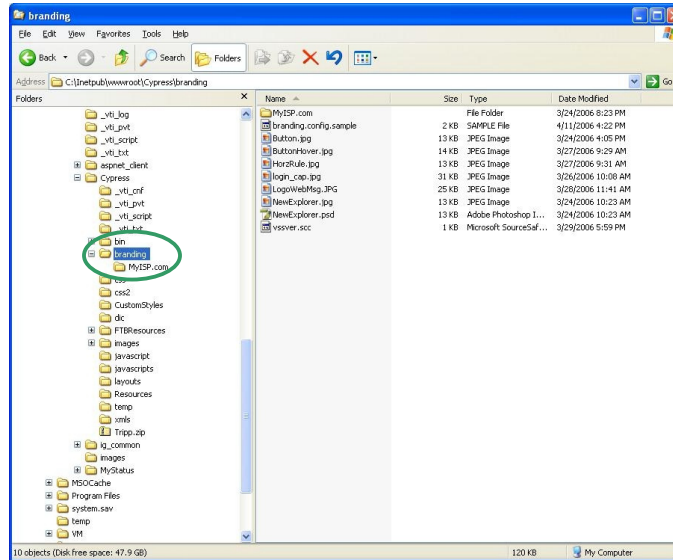
```
C:\Program Files\Ipswitch\Collaboration Suite\WebDir\WebClient\Branding,
```

and for IMail it's

```
C:\Program Files\Ipswitch\Imail\WebDir\WebClient\Branding.
```

Domain Folders

If you would like to customize by domain, place a branding.config file in the folder located inside the branding folder. The name of this folder should be the domain name; do not include "www." or any port information in the folder name, as in the following example.



The Branding.config File

The source for branding your Web Client installation is the branding.config file that you create, using branding.config.sample as your starting point. As mentioned earlier, this branding.config file is located in either the branding folder or the branding/domain folder, or both. The copy in the domain folder will override the one in the branding folder.

The following is the content of a sample branding.config file:

```
<?xml version="1.0" encoding="utf-8" standalone="yes"?>
```

```
<brandElements>
```

```
  <add key="all"
value=".BarButton{background:url (branding/
button.jpg) }"/>
```

```
  <add key="all"
value=".BarButtonHover{background:url (branding/
buttonhover.jpg) }"/>
```

```
  <add key="all"
value=".BarButtonRight{background:url (branding/button.jpg
) }"/>
```

```
<add key="all"
value=".ButtonBarRightHover{background:url (branding/
buttonhover.jpg) }">
```

```
<add key="all"
value=".outlookTitleCellwithBorder{background-
image:url (branding/button.jpg) }"/>
```

```
<add key="all"
value=".outlookTitleCellwithoutBorder{background-
image:url (branding/button.jpg) }"/>
```

```
<add key="all" value=".outlookTitleCell{background-
image:url (branding/button.jpg) }"/>
```

```
<add key="all" value=".PopupBG{background-
color:#D2A997;}"/>
```

```
<add key="all" value=".ButtonBarBG{BACKGROUND:
url (branding/button.jpg) ;}"/>
```

```
<add key="login.aspx" value=".LoginTable{background-
image: url (branding/login_cap.jpg) }" />
```

```
<add key="toolbar.aspx"
value=".ToolbarMainImg{background-
image:url (branding/LogoWebMsg.jpg) ;width:296px;height:49p
x }"/>
```

```
<add key="toolbar.aspx"
value=".ToolbarHuman{background-
image:url (images/icn_go_16.gif) ;width:16px;height:16px}"/
>
```

```
<add key="toolbar.aspx"
value=".ToolbarHeaderStretch{background-
image:url (branding/ horzrule.jpg) }"/>
```

```
<add key="folderlist.aspx"
value=".folderListTab{background:url (branding/
NewExplorer.jpg) }"/>
```

```
<add key="folderlist.aspx"
value=".FLGroupButton{background-image:url (branding/
button.jpg) }"/>
```

```
<add key="folderlist.aspx"
value=".FLGroupButtonHover{background-image:url (branding/
buttonhover.jpg) }"/>
```

```

    <add key="composemsg.aspx"
value=".ComposeOptionsBG{background-color:#D2A997;}" />

    <add string="WelcomeMessage" value="Welcome to Tom's
Web Hosting" />

</brandElements>

```

Notice that the branding.config.sample file is a simple XML file with key/value or string/value pairs. The key/value pairs are used to override any of the styles listed in the Cypress.css file. The string/value pairs are used to override any string in the string resource.dll. See the following section for the details of each override type.

Changes made to the branding.config file take effect when the browser is restarted.

What Can Be Changed (Overrides)

Without making changes to the html (aspx), you should be able to customize everything you need to brand the Web Client to your liking. The following sections describe what can be customized and how to go about doing it.

Images/Styles/Strings

Not all images can be changed without directly modifying the images in the images folder. If you do decide to modify these files, they will be replaced during the next software upgrade or repair.

The images you can change are those referenced in the Cypress.css style sheet. For a complete listing, open the Cypress.css file in an editor and search for the "images" folder name. You should be able to determine which images are being referenced as a style instead of an IMG tag. You can only override images that are included as an attribute of a style. IMG tags cannot be overridden.

Login Page Example

One of the easiest images to override is the Login page background image -- easiest because size is not critical here. The image just needs to be large enough to hold the controls that are used to logon. The following is the line in the branding.config file for the login.aspx page:

```

<add key="login.aspx" value=".LoginTable{background-
image: url (branding/login_cap.jpg)}" />

```

If you locate this line in the Cypress.css file, it looks like this:

```

.LoginTable{width: 448;background-image: url ( images/
LoginBg.jpg) ; background-repeat:no-repeat;}

```

Notice that the override in the branding.config file does not include all of the attributes that are in the Cypress.css file. You only need to provide the attributes that are to be changed. In this case, if you do change the width of the image, you should include the width attribute in the branding.config file as well.

Globally Changing Styles

An example of a style that appears in numerous pages is the ButtonBar style. To change the ButtonBar styles, specify "all" as the key and that style applies to all pages in the system.

Background color is another popular style to change. In the branding.config.sample file, there is a line for changing the background color on the Compose page and some of the other popup pages:

```
<add key="all" value=".PopupBG{background-color:
#D2A997;} />
```

Overriding Strings

Strings can be difficult to override because you need to find the correct string name from the resource DLL. However, once found, all you need to do is supply the string name and a new value for it. You need a resource editor or viewer to get at the value in DLLs. The DLLs are located at bin/languagefolder in the virtual directory where languagefolder is the language-country combination.

String Override Examples

WelcomeMessage: This is the title on the user's home page.

lblLoggedIn: This is the text at the top of the screen with the default value of "Logged in as:" The entire xml entry for this would be:

```
<add string="lblLoggedIn" value="Current User:" />
```